

**(9th Aug 2018) Sutherland Turned Parts Ltd Auction**

1st Machinery Auctions are offering a complete plant clearance from Sutherland Turned Parts Ltd due to retirement.








Online Auction Date: Thursday 9th August 2018 - 3pm GMT.

Viewing Dates: Appointment only Call us for more details: 02476 992205  
 info@1stmachineryauctions.com

\*\*Machines will be disconnected but there are NO loading facilities on site

Lot no.	Description
1	 <p><b>Daewoo Puma 230 MS Twin Spindle CNC Lathe (2003)</b>            Daewoo Puma 230 MS Twin Spindle CNC Lathe (2003) Short Magazine Barfeed 8" Chuck Comes with manuals and selection of driven tools Barfeed - 83"L X 52"W X 46"H</p>
2	 <p><b>Star SA 12 CNC Lathe (2000)</b>            Star SA 12 CNC Lathe (2000) Comes with manuals Barfeed - 155"L X 30" W X 50"H</p>
3	 <p><b>Citizen L25 Sliding Head Twin Spindle CNC Lathe</b>            Citizen L25 Sliding Head Twin Spindle CNC Lathe Magazine Barfeed Comes with manuals Barfeed - 105"L X 30"W X 56"H</p>
4	 <p><b>Colchester Tornado 80 (1997)</b>            Colchester Tornado 80 (1997) Comes with manuals Barfeed - 73"L X 40" W X 36"H</p>

Lot no.	Description
5	 <p><b>Star RNC 16 Sliding Head Twin Spindle CNC Lathe (1990)</b> Star RNC 16 Sliding Head Twin Spindle CNC Lathe (1990) Magazine Barfeed Barfeed - 237"L X 18"W X 52"H</p>
6	 <p><b>Star SR 20 Sliding Head Twin Spindle CNC Lathe (1993)</b> Star SR 20 Sliding Head Twin Spindle CNC Lathe (1993) Magazine Barfeed Comes with Filtermist Barfeed - 192"L X 20"W X 54"H</p>
7	 <p><b>Cabinet with Star Tooling</b> Cabinet with Star Tooling Suitable for lots 1, 5, 6 &amp; 9</p>
8	 <p><b>Selection of Bushes</b> Selection of Bushes Suitable for lots 5 &amp; 9</p>
9	 <p><b>Star RNC 16 Sliding Head CNC Lathe (Single Head) (1995)</b> Star RNC 16 Sliding Head CNC Lathe (Single Head) (1995) EC Magazine Barfeed Comes with manuals Barfeed - 165"L X 25"W X 55"H</p>

Lot no.	Description
10	 <p data-bbox="461 415 1109 443"><b>Star SR16 Sliding Head Lathe with Barfeed</b></p> <p data-bbox="461 457 1507 527">Star SR16 Sliding Head Lathe with Barfeed Barfeed - 230"L X 21"W X 51" H</p>
11	 <p data-bbox="461 646 870 674"><b>Large Mill with Power Feed</b></p> <p data-bbox="461 688 781 726">Large Mill Power Feed</p>
12	 <p data-bbox="461 1020 870 1050"><b>Large Mill with Power Feed</b></p> <p data-bbox="461 1064 781 1100">Large Mill Power Feed</p>
13	 <p data-bbox="461 1394 902 1423"><b>Accaratools 2nd OP Machine</b></p> <p data-bbox="461 1438 875 1474">Accaratools 2nd OP Machine</p>
14	 <p data-bbox="461 1631 995 1661"><b>Ward Capstan 1 1/2 inch Cap Lathe</b></p> <p data-bbox="461 1675 1057 1711">Ward Capstan 1 1/2 inch Cap With tooling</p>

**Lot  
no.**

**Description**

---

15



**Feeler toolroom lathe**

Feeler toolroom lathe c/w: collets etc as per photos

---

16



**Table with Linisher**

Table with Linisher

---

17



**Small Mill**

Small Mill

---

18



**Small Mill**

Small Mill

---

**Lot  
no.**

**Description**

---

19



**Denbigh Fly Press**

Denbigh Fly Press

---

21



**Polisher**

Polisher

---

22



**Bench with 4 x Drills attached**

Bench with 4 x Drills attached

---

23



**Essex Tapper**

Essex Tapper

---

**Lot  
no.**

**Description**

---

24



**Small Vertical Bandsaw**  
Small Vertical Bandsaw

---

25



**Smart & Brown Lathe**  
Smart & Brown Lathe

---

26



**Rand Compressor**  
Rand Compressor

---

27



**Index Lathe**  
Index Lathe

---

28



**Buck & Hickman Grinder**  
Buck & Hickman Grinder

---



**Lot  
no.**

**Description**

---

29



**Double Ended Grinder**

Double Ended Grinder

---

30



**Tip Lap Machine**

Tip Lap Machine

---

31



**Table with Press & Vice**

Table with Press & Vice

---

32



**Drill**

Drill

---

**Lot  
no.**

**Description**

---

33



**Herbert 88**

Herbert 88

---

34



**Bench with Vice**

Bench with Vice

---

35



**Abwood Grinder**

Abwood Grinder

---

36



**Herbert**

Herbert

---

37



**Kango Double Ended Grinder**

Kango Double Ended Grinder

---



**Lot  
no.**

**Description**

---

38



**Union Double Ended Grinder**

Union Double Ended Grinder

---

39



**Linisher**

Linisher

---

40

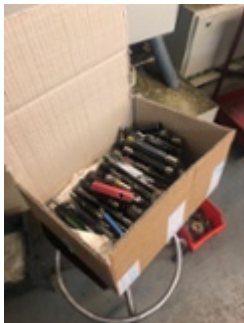


**Trolley**

Trolley

---

41



**Selection of Ring Gauges**

Selection of Ring Gauges

---

**Lot  
no.**

**Description**

---

42



**Selection of Plug Gauges**

Selection of Plug Gauges

---

43



**Cabinet with Contents**

Cabinet with Contents

---

44



**Cabinet with Contents**

Cabinet with Contents

---

45



**Compressor**

Compressor

---

Lot no.	Description
46	 <p data-bbox="461 415 915 491"><b>Mitutoyo PJ311 Shadowgraph</b> Mitutoyo PJ311 Shadowgraph</p>
47	 <p data-bbox="461 785 915 861"><b>Geko PP50 Punching Machine</b> Geko PP50 Punching Machine</p>
48	 <p data-bbox="461 1163 1446 1239"><b>Swarf Centrifuge</b> Swarf Centrifuge *Please be aware that this item is bolted to the floor*</p>
49	 <p data-bbox="461 1533 1446 1608"><b>Swarf Centrifuge</b> Swarf Centrifuge *Please be aware that this item is bolted to the floor*</p>

**Lot  
no.**

**Description**

---

50



**Grinding Attachment**

Grinding Attachment

---

51



**Fobco Drill/Saw**

Fobco Drill/Saw

---

52



**Saw**

Saw

---

53



**Moore & Wright Micrometer Set**

Moore & Wright Micrometer Set

---

**Lot  
no.**

**Description**

---

54



**Moore & Wright Micro 2000**

Moore & Wright Micro 2000

---

56



**Mitutoyo Vernier**

Mitutoyo Vernier

---

57



**Selection of Caliper Gauges**

Selection of Caliper Gauges

---

58



**Box of Drills**

Box of Drills

---

**Lot  
no.**

**Description**

---

59



**Cabinet with Contents**

Cabinet with Contents Assortment of Reemers

---

60



**Cabinet**

Cabinet \*Contents NOT included

---

61



**Ajax Double Ended Grinder**

Ajax Double Ended Grinder

---

62



**Small Kango**

Small Kango

---



**Lot  
no.**

**Description**

63



**Selection of Coventry Die Heads**

Selection of Coventry Die Heads

64



**Large Quantity of Drills**

65



**Large Quantity of Steel Containers**

66



**Large Quantity of Steel Drip Trays**

67



**1" Knurling Box**

**Lot  
no.**

**Description**

---

68



**Steel Racking**